

# RPM-AC FINNED FRAME VARIABLE SPEED ALTERNATING CURRENT MOTOR FL3698Z

COOLING: BLOWER COOLED

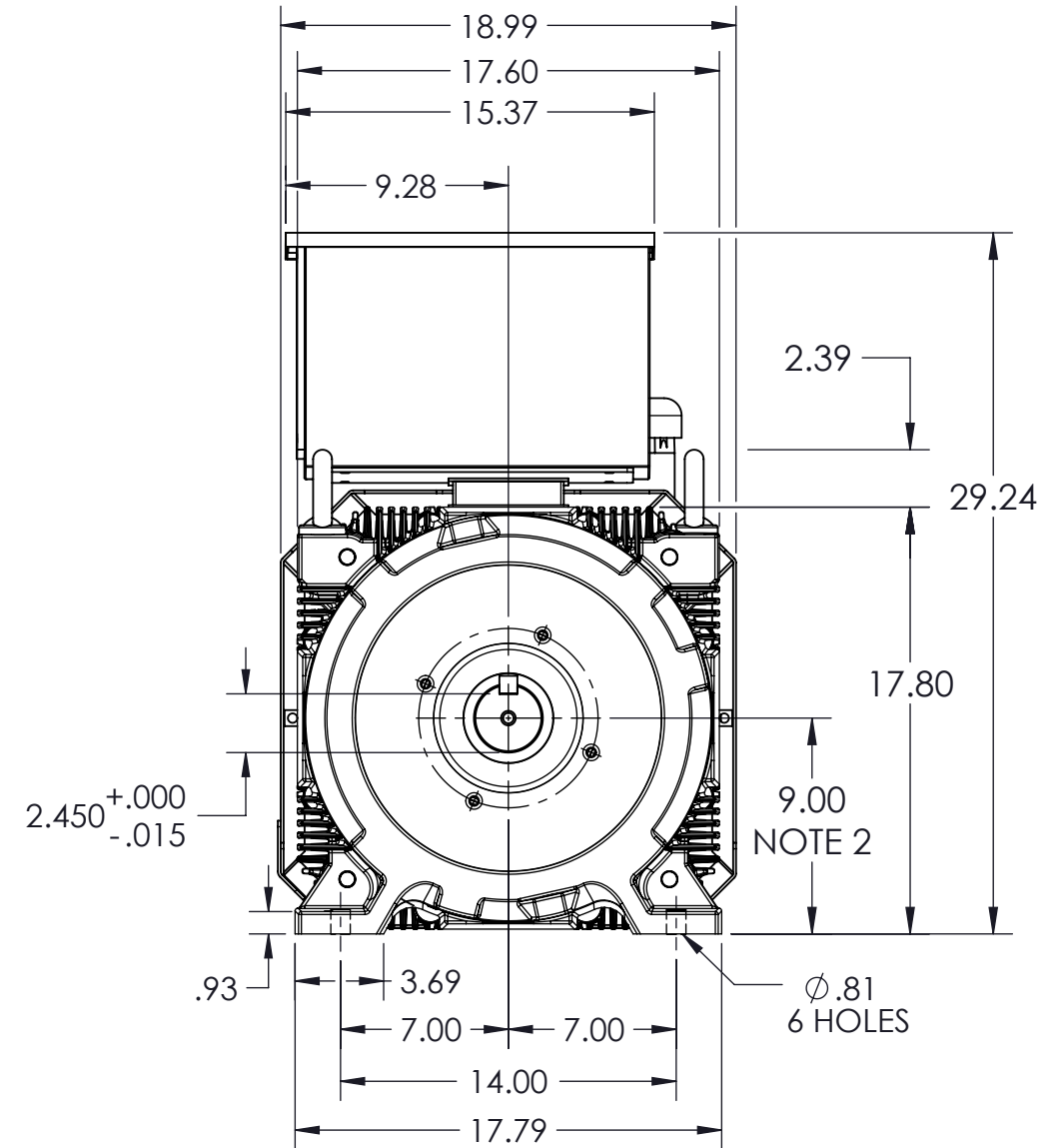
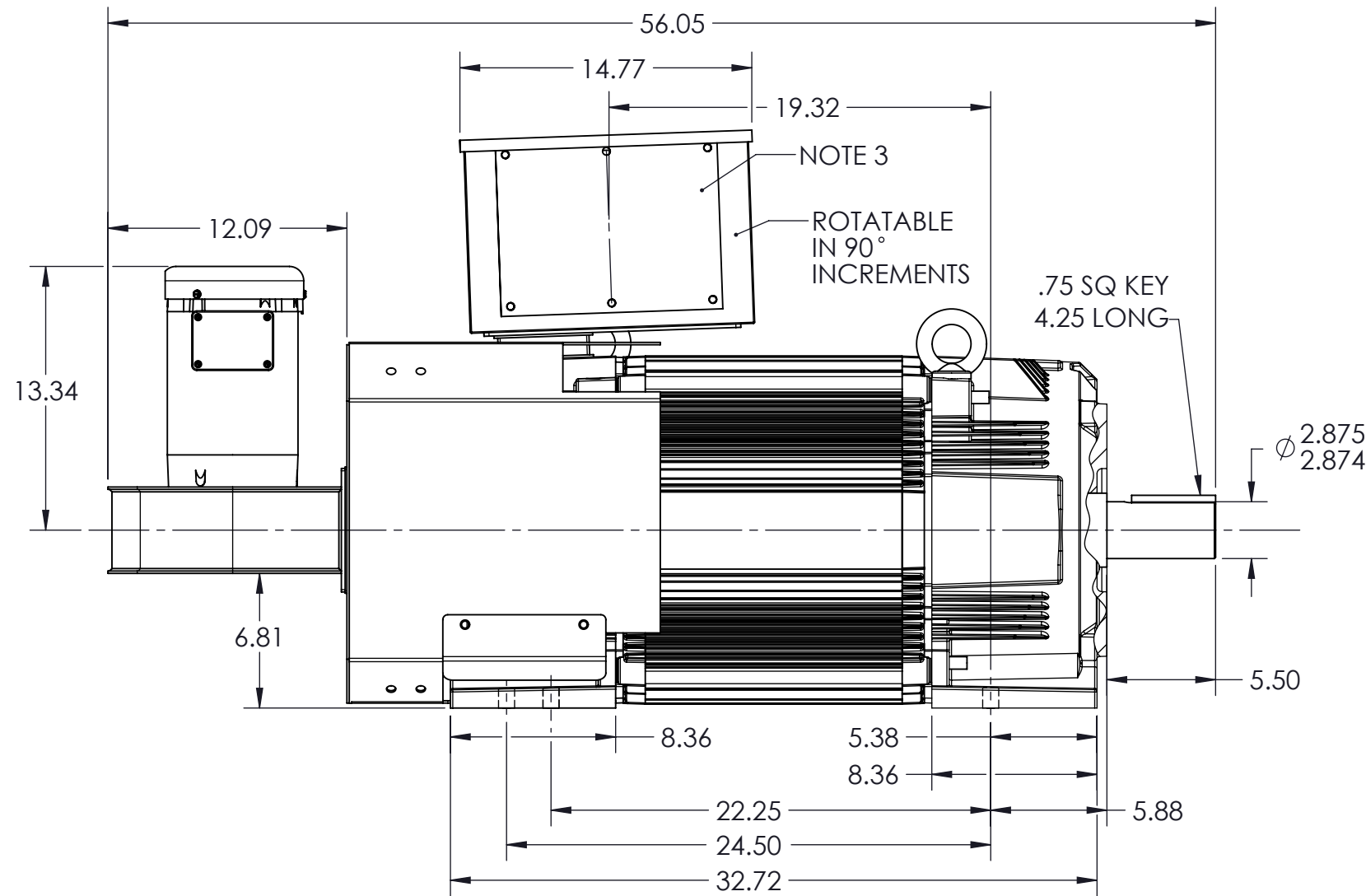
ACCESSORIES: PROVISIONS FOR TACHOMETER MOUNTING ONLY WHEN SPECIFIED

ENCLOSURE: TOTALLY ENCLOSED

MOUNTING: FOOT

DRIVE METHOD: COUPLED OR BELTED

619678-001



NOTES:

- O.D.E. C-FACE & TACHOMETER MOUNTING. 1/2-13 TAP, 1.00 DEEP, ON A  $\phi$ 7.25 B.C. FACE RUNOUT AND ECCENTRICITY 0.004 MAX. T.I.R.
- SHAFT HEIGHT WILL NOT BE EXCEEDED. SHIMS UP TO 0.06 INCHES IN THICKNESS ARE USUALLY REQUIRED FOR COUPLED OR GEARED MACHINES.
- REMOVABLE COVER PLATE FOR CUSTOMER DRILLING.

- TERMINAL BOX MAY BE LOCATED F1, F2, OR F3 IF SPECIFIED.
- REFER TO 616779-55 FOR SPECIFIED TACHOMETER DIMENSIONS.

DIMENSIONS ARE IN INCHES

MOTOR WEIGHT: 1800 LBS. (MAY VARY 15% FOR NON-STANDARD RATINGS AND / OR ACCESSORIES.)

CUSTOMER IS RESPONSIBLE FOR DETERMINING THAT BALDOR'S PRODUCT WILL PERFORM SUITABLY IN THE INTENDED APPLICATION

REV. DESC: REMOVED 1/4" FROM SHAFT EXT "V" DIM			
REV: A	VERSION: 01	REVISED: 01:22:08 12/17/2014	TDR: 00000884351
MODEL NO. 619678-001		REF: -	
BY: MGH TLC			<b>B</b>

**BALDOR**

DIM SHEET, FL3698Z, FOOTED, RPM-AC, TEBC

619678-001