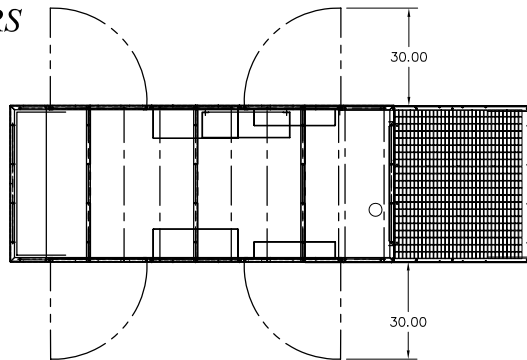


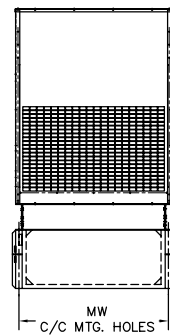
# BALDOR GENERATORS

## GENERAL INSTALLATION FOR IDLC GENERATORS

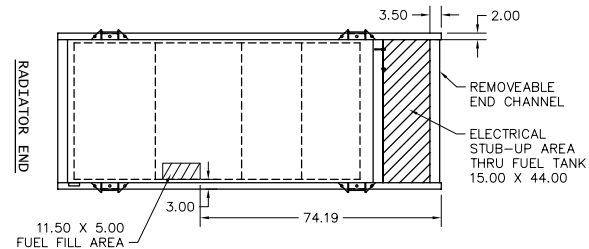
UL2200 MODEL #	MODEL #	OVERALL LENGTH L	OVERALL WIDTH W	OVERALL HEIGHT H	HOOD LENGTH HL	MOUNTING HOLE 1 M1	MOUNTING HOLE 2 M2	MOUNTING WIDTH MW	TANK HEIGHT TH (12-17 HRS)	TANK HEIGHT TH (24-34 HRS)
IDLC180-3JU	IDLC180-3J	148	48	62	30	24.00	94.00	46.00	14	26
IDLC200-3JU	IDLC200-3J									
IDLC225-3JU	IDLC225-3J	160		68	42	16.00	92.00		18	33
IDLC250-3JU	IDLC250-3J									
IDLC275-3JU	IDLC275-3J									



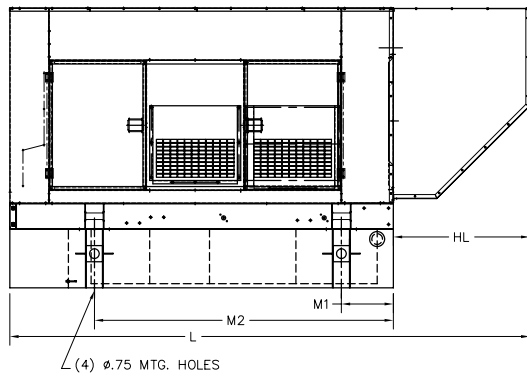
PLAN VIEW



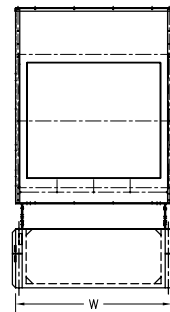
REAR VIEW



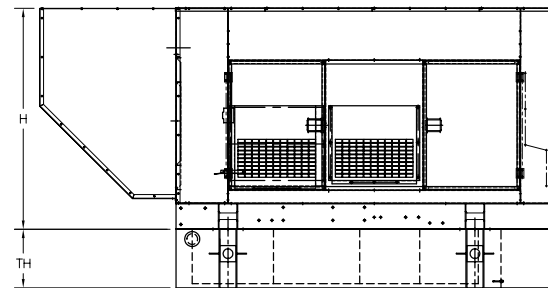
PLAN VIEW OF TANK ONLY



RIGHT SIDE VIEW



FRONT VIEW



LEFT SIDE VIEW

NOTES:

FOR PRODUCT DATA REFER TO BALDOR MODEL SPEC SHEETS

FOR INSTALLATION RECOMMENDATIONS REFER TO GEN SET MANUAL MN2407

ALL DIMENSIONS IN INCHES

DRAWING TO SCALE

TOLERANCES UNLESS OTHERWISE SPECIFIED  
DECIMALS .XX ±.25 FRACTIONS ±1/4

CUSTOMER IS RESPONSIBLE FOR DETERMINING THAT MOTOR PERFORMANCE IS SUITABLE IN THE APPLICATION.

REV. DESC: UPDATE TABLE		
REV. LTR: C	VERSION: 03	TDR: 000000451565
FILE: \PGA\00010\468	REVISED: 14:27:13 12/13/2007	BY: PGCONB0
MTL: -	TAB: SA_IS_180_275	

**BALDOR • DODGE • RELIANCE**

IDLC 30-500-07E