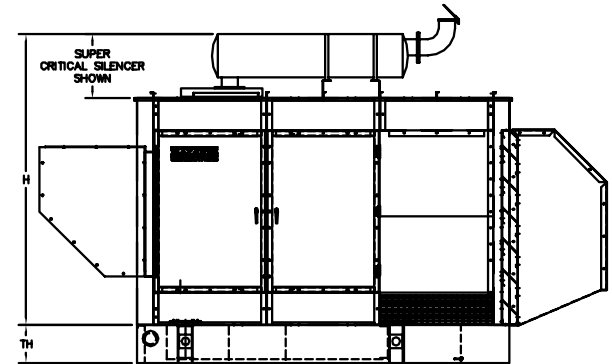
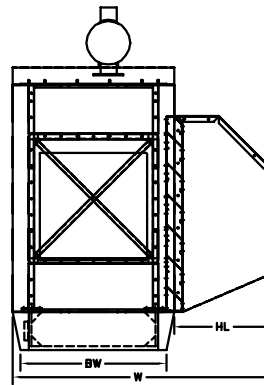
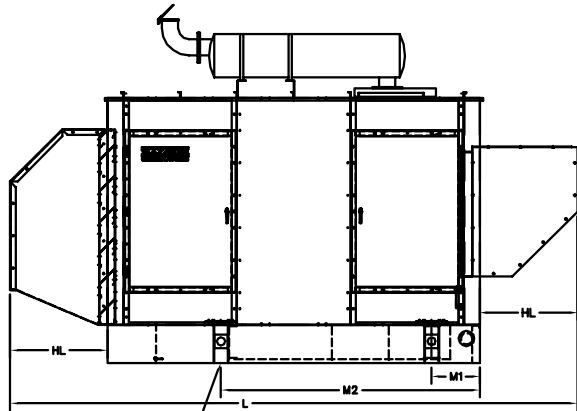
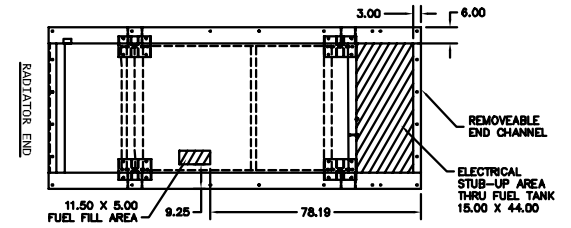
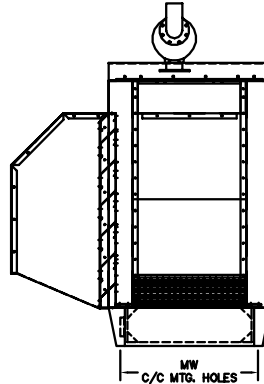
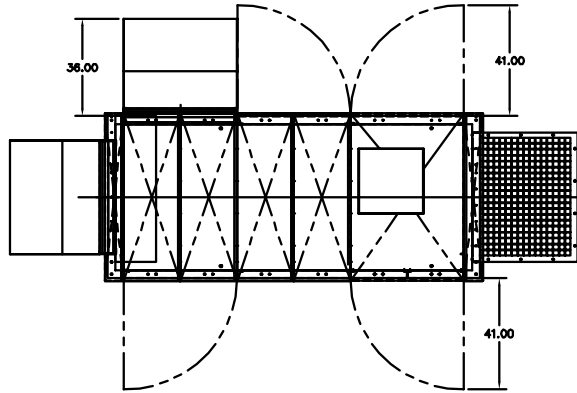


BALDOR GENERATORS

GENERAL INSTALLATION FOR IDLC GENERATORS

UL2200 MODEL #	MODEL #	OVERALL LENGTH L	OVERALL WIDTH W	OVERALL HEIGHT H	HOOD LENGTH HL	BASE WIDTH BW	MOUNTING HOLE 1 M1	MOUNTING HOLE 2 M2	MOUNTING WIDTH MW	TANK HEIGHT TH (12-17 HRS)	TANK HEIGHT TH (24-34 HRS)	TANK HEIGHT TH (FRAME ONLY)
IDLC180-3J	IDLC180-3J	222	102	96	42	54	28.00	98.00	51.00	11	20	8
IDLC200-3J	IDLC200-3J			108								
IDLC225-3J	IDLC225-3J			110								
IDLC250-3J	IDLC250-3J											
IDLC275-3J	IDLC275-3J											



NOTES:

FOR PRODUCT DATA REFER TO
BALDOR MODEL SPEC SHEETS

FOR INSTALLATION RECOMMENDATIONS
REFER TO GEN SET MANUAL MN2407

ALL DIMENSIONS IN INCHES

DRAWING TO SCALE

TOLERANCES UNLESS OTHERWISE SPECIFIED
DECIMALS .XX ±.25 FRACTIONS ±1/4

CUSTOMER IS RESPONSIBLE FOR DETERMINING THAT BALDOR'S PRODUCT WILL PERFORM SUITABLY IN THE INTENDED APPLICATION.

REV. DESC: REVISE DWG SA-IS-30-150 STUB-UP	VERSION: 05	TDR: 00000521786
REV. LTR: E	REVISED: 02:39:51 12/18/2009	BY: PGCONBO
FILE: \PGA\00010\468	MTL: -	TAB: SA_L2_180_275

BALDOR • DODGE • RELIANCE

IDLC 30-500-07E

SH 10 of 12